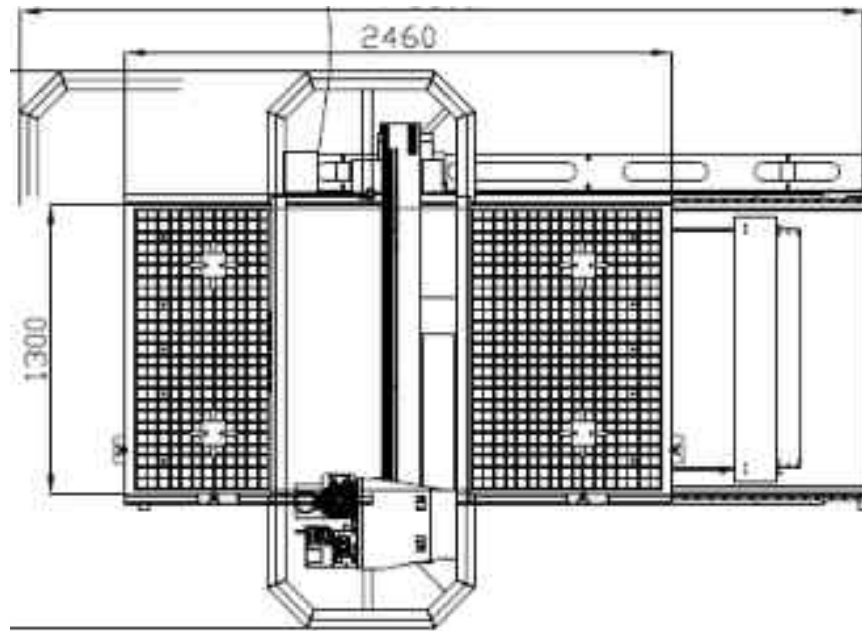




COSMEC

TECHNOLOGY S.R.L.

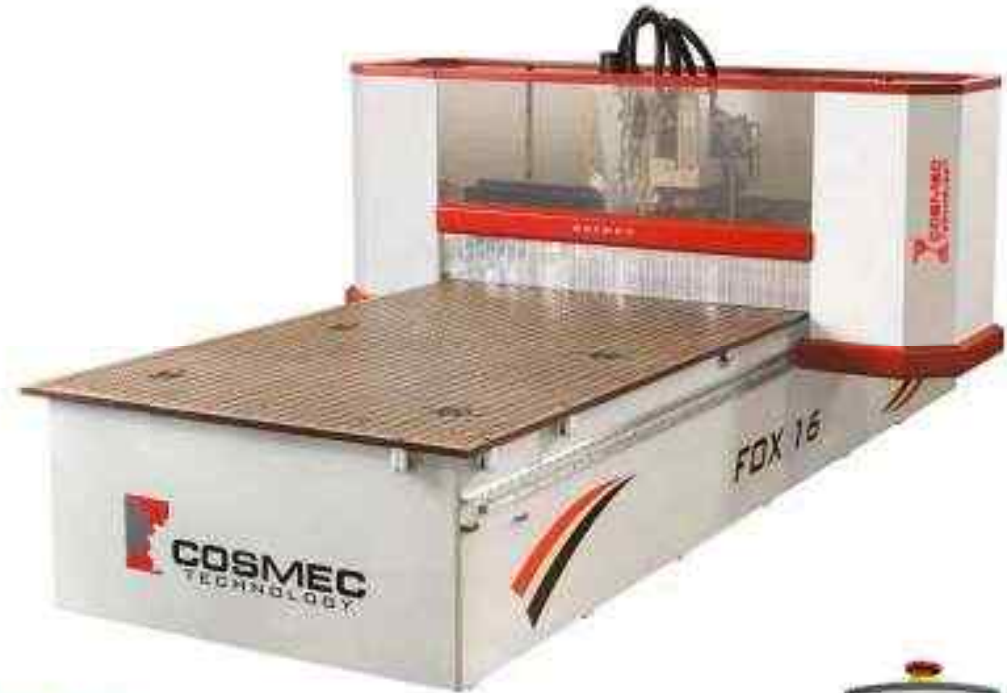
FOX 13 S





FOX 13 S

FOX S 13



BAKELITE SANDWICH TABLE



100 M3/H PUMP



REMOTE

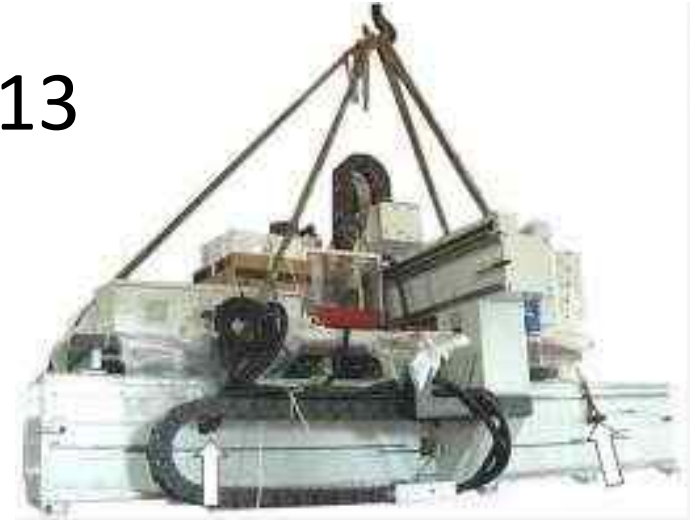


FOX 13 S

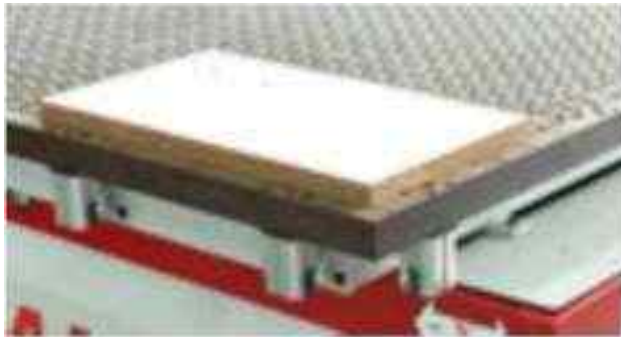
FOX S 13



CE NORMS



PACKING INCLUDED



6 STOPS (1 LEFT + 1 RIGHT + 4 FRONT)



DOUBLE MOTORISATION



PC



FOX 13 S

FOX S 13



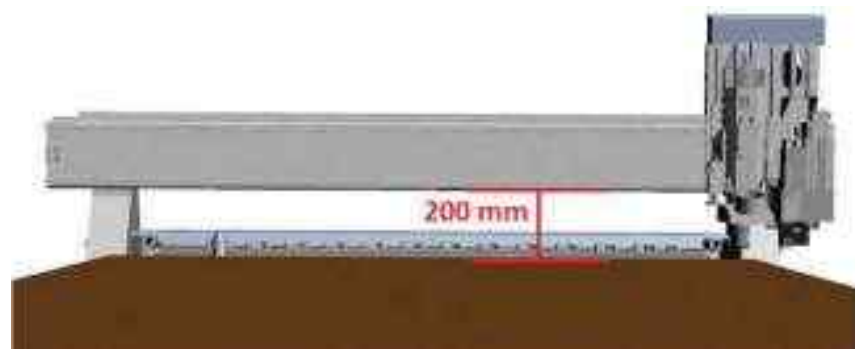
12 KW ISO 30 AIR COOLED ROUTER



RACK AND PINION IN «X» AXIS



RACK AND PINION IN «Y» AXIS
AXIS



PIECE PASSAGE 200 mm



SCREW IN «Z»



FOX 13 S

FOX S 13



12 POSITIONS ROTARY TOOL CHANGER



CN CONTROLLED DUST EXTRACTOR BELLOW



FOX 13 S

FOX S 13



OSAI CN CONTROLLER



MANUAL LUBRIFICATION

FX 02 A



THREAD HOLES WITH
SCREW TO LOCK JIGS,
DEVICES OR SPOIL BOARD

FOX 13 S

FX 02 BA



SIDE STOP



FX 02 C



VACUUM CUP

H=50mm x 52mm DIAMETER

FX 02 D

VACUUM CUP

H=50mm x 71mm

DIAMETER





FOX 13 S

FX 02 E

VACUUM CUP
H=70mm x 52mm
DIAMETER



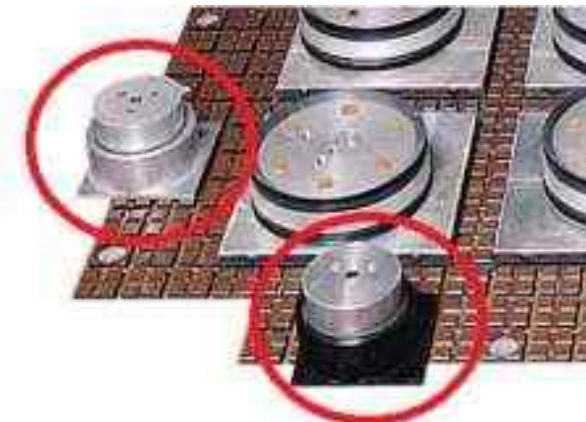
FX 02 F



VACUUM CUP
H=70mm x 71mm
DIAMETER

FX 02 G

REFERENCE STOP ON THE
TABLE. **REQUIRES PILOTING
SYSTEM** FX 02 BAA





FOX 13 S

FX 02 BAA
FX 02 H



PILOTING SYSTEM FOR
CLAMPING

FX 02 N



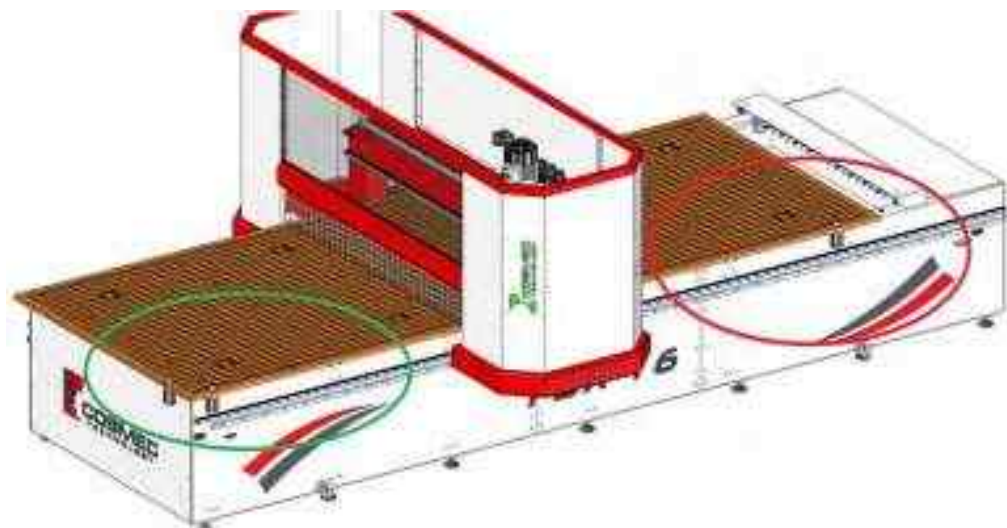
SWEEPING ARM
TO PUSH OUT
NESTED BOARDS



FOX 13 S

FX 02 Q

PENDULAR SYSTEM
MANUAL SELECTION
PRE-INSTALLATION



FX 02 R

PENDULAR SYSTEM
AUTOMATIC SELECTION





FOX 13 S

FX 03 A



**250 M3/H PUMP INSTEAD
THE 100M3/H PUMP**

FX 03 B



**500 M3/H PUMP INSTEAD
THE 100M3/H PUMP**

FX 03 C



SECOND 100 M3/H PUMP



FOX 13 S

FX 03 D



SECOND
250 M3/H PUMP

FX 03 F



SECOND
500 M3/H PUMP

FX 03 G

PRE-INSTALLATION FOR
FURTHER VACUUM PUMP



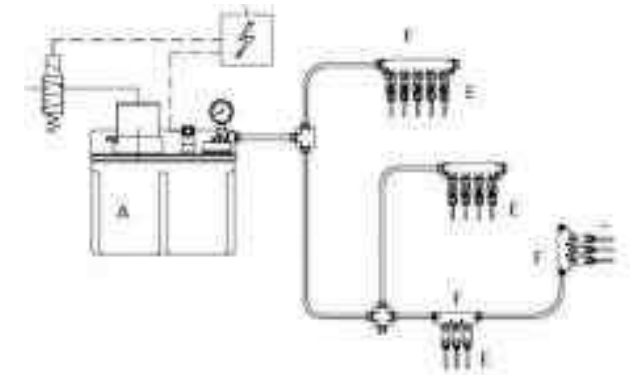


FOX 13 S

FX 04 AA PROTECTION CURTAINS



FX 04 AB AUTOMATIC CENTRALIZED LUBRIFICATION



FOX 13 S

FX 06 E



HSK ROUTER **INSTEAD** OF ISO 30



FX 06 E1

HSK E40 6,5 KW 32.000 RPM
INSTEAD OF 12 KW ISO 30



FX 06 E2



HSK E40 6,5 KW 36.000 RPM
INSTEAD OF 12 KW ISO 30



FOX 13 S

FX 06 E3



HSK E 32 6,5 KW
40.000 RPM **INSTEAD**
OF 12 KW ISO 30

FX 06 E4

SECOND ISO 30
12 KW ROUTER



FX 06 E5



SECOND HSK
12 KW ROUTER



FOX 13 S

FX 06 F AIR / OIL BLOWERS



REFRIGERATED AIR BLOWER FX 06 G

FX 06 H AIR BLOWER





FOX 13 S

FX 06 EB



INVERTER

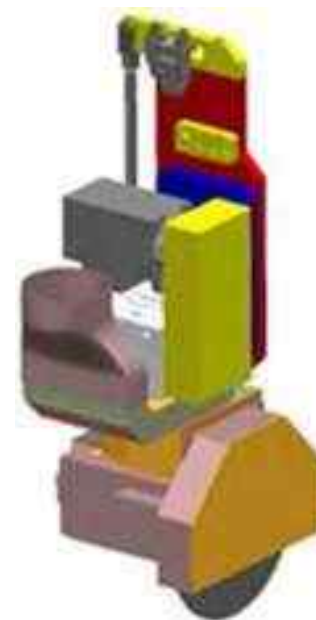
ANTISTATIC BAR TO AVOID
ELECTRICAL CHARGES

FX 06 HA



FX 06 I

2,5 KW HORIZONTAL SAWING
GROUP 0°/90° PNEUMATICAL
TURNING





FOX 13 S

FX 06 L

DRILLING UNIT
6 VERTICALS +
4 HORIZONTALS
INDIPENDENT «Z»



FX 06 LA



DRILLING UNIT
6 VERTICALS+
4 HORIZONTALS +
SAW IN "X"
INDIPENDENT "Z"



FOX 13 S

FX 06 LB

DRILLING UNIT
10 VERTICALS +
6 HORIZONTALS +
SAW IN «X»



ASSIEME ELETTROMANDRINO
+ ASSE C + RINVIO ANGOLARE



ROTOR AXIS
4TH AXIS
"C" AXIS

FX 06 M





FOX 13 S

FX 06 N

DUST EXTRACTOR



FX 06 R

FLANGE



FX 06 O

SAW BLADE AGGREGATE UP TO
140 mm SAW



FOX 06 OA



FOLDING AGGREGATE



FOX 13 S



FX 06 P 2 HORIZONTAL EXITS AGGREGATE



FX 06 Q

1 HORIZONTAL EXIT AGGREGATE

FOX 07 C

**RACK TOOL
CHANGER 8
POSITIONS**





FOX 13 S

FX 07 CE

RACK TOOL CHANGER
8 POSITIONS
FOR NESTING LINE



FX 06 IA



DIRECT MOTOR 2,5 KW WITH 2 OPPOSITE EXITS
FOR ROUTING AND DRILLING



FOX 13 S

FX 07 F SWEEPING ARM +
TABLE CLEANER
REDUCE PIECE PASSAGE
AT 120 mm



FX 07 G



INFEED VACUUM DEVICE

FX 07 HB

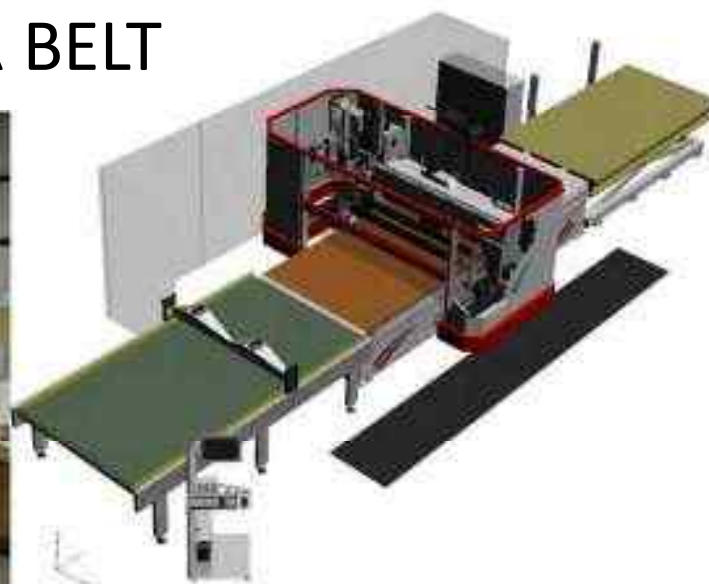
INFEED
LOADING TABLE





FOX 13 S

FX 07 IB OUTFEED CONVEYOR BELT



F 07 LB FIX OUTFEED
TABLE





FOX 13 S

FX 07 M

LABEL PRINTER

UP TO 300 LABELS PER DAY



FX 07 N



LABEL PRINTER

MORE THAN 300 LABELS PER DAY

FX 07 O

SIDE ALIGNMENT PUSHER





FOX 13 S

MORE THAN
PER I



FX 08 B PRESETTING FOR TOOL'S LENGHT



FX 08 C

PRESETTING FOR
TOOL'S DIAMETER AND LENGH

FX 09 A

HSK OR ISO 30
CONE AND COLLET





FOX 13 S

FX 10 A

AUTOTRASFORMER FOR
DIFFERENT VOLTAGES



FX 10 C



AIR CONDITIONER FOR
ELECTRIC CABINET

FX 12 A

TELESERVICE



FOX 13 S

FX 12 D INSTALLATION
 IN ITALY



FX 12 E INSTALLATION
 IN EUROPE



FX 12 F INSTALLATION
 OUT OF
 EUROPE





FOX 13 S

FX 18 A

SEAWORTHY
PACKING



FX 18 B



TRANSPORT

SM 04I

2 HORIZONTAL EXITS
AGGREGATE

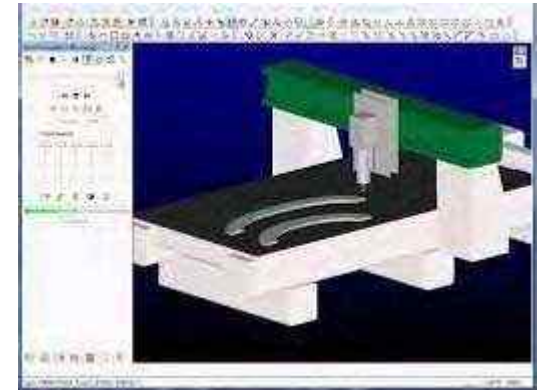




FOX 13 S

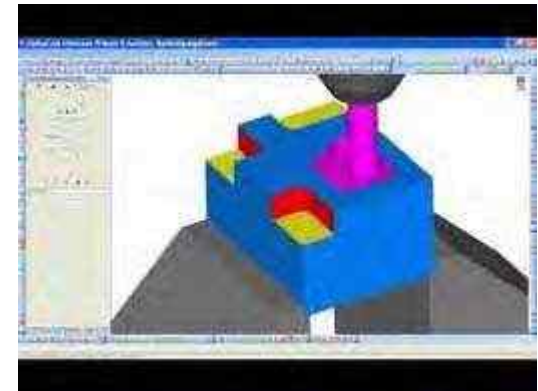
SW 01 A

ALPHACAM ESSENTIAL
1 POST



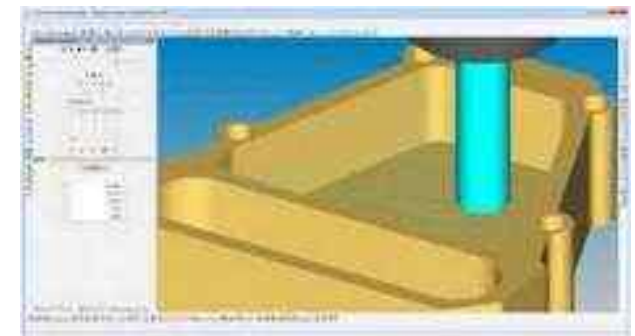
SW 01 B

ALPHACAM ESSENTIAL
MULTIPOST



SW 01 C

ALPHACAM STANDARD
1 POST

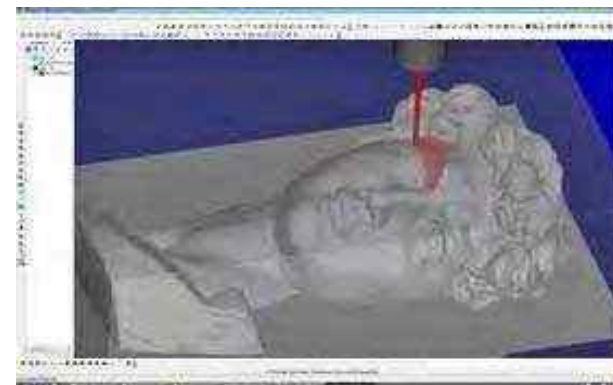




FOX 13 S

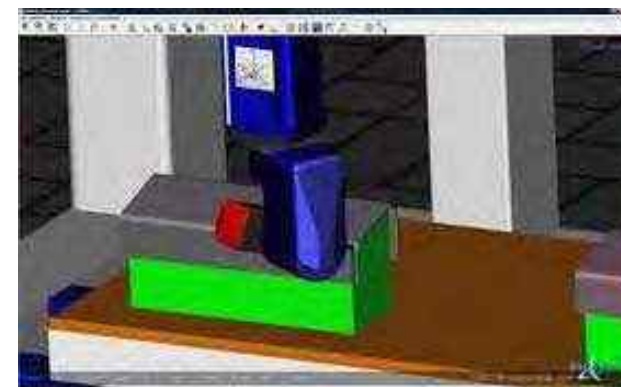
SW 01 D

ALPHACAM STANDARD
MULTIPOST



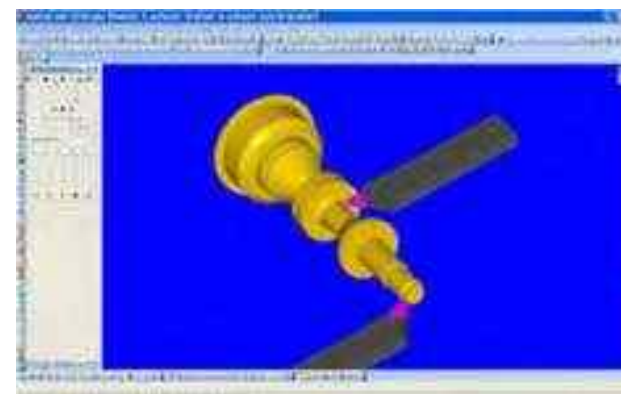
SW 01 E

ALPHACAM ADVANCED
1 POST



SW 01 H

ALPHACAM ADVANCED
MULTIPOST



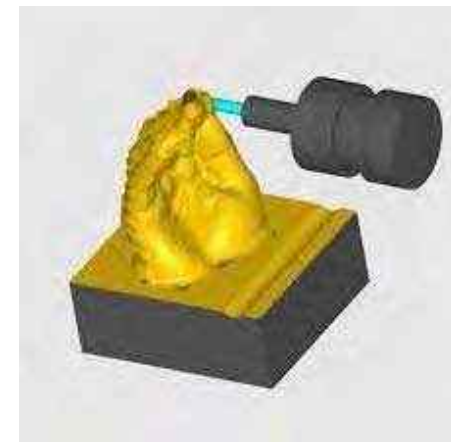


FOX 13 S

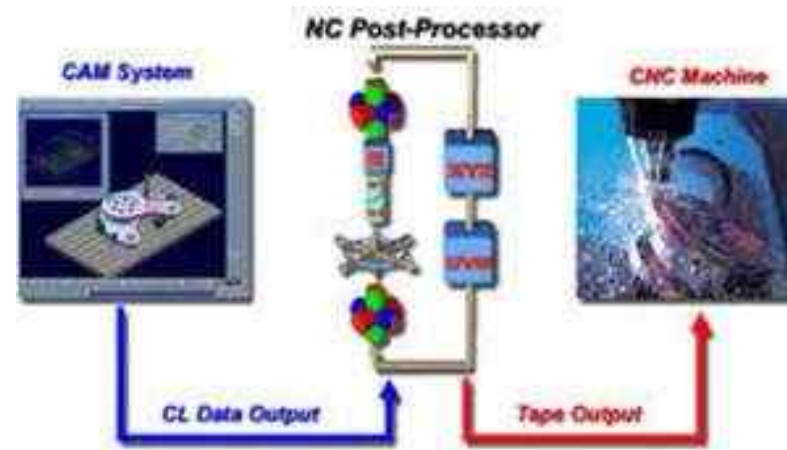
SW 01 I ALPHACAM ULTIMATE
1 POST



SW 01 L ALPHACAM ULTIMATE
MULTIPOST



SW 01 M
NR SA 80C



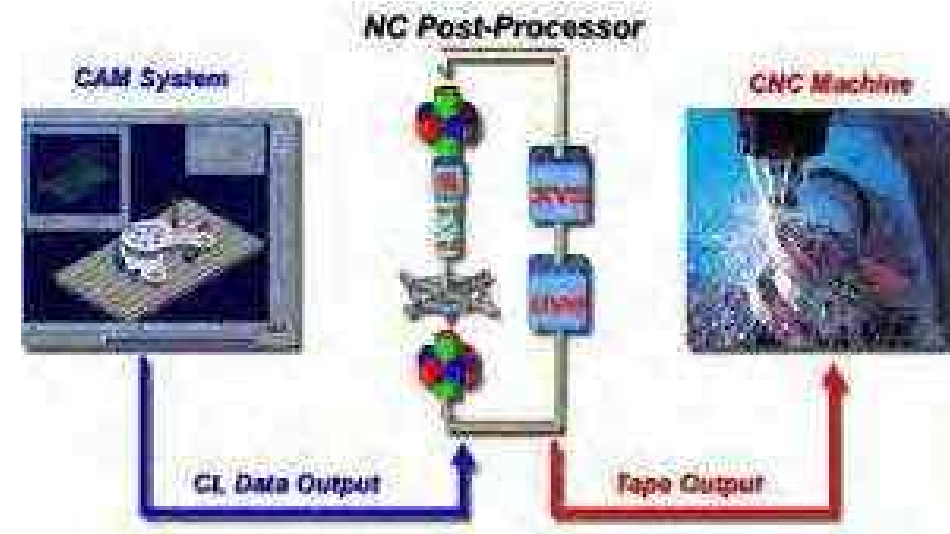
**3 AXIS POST
PROCESSOR**



FOX 13 S

SW 01 N

5 AXIS POST
PROCESSOR



SW 02 A

ASPAN SE



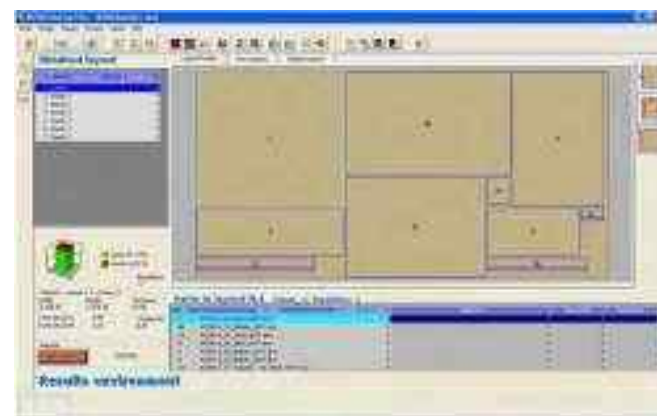


FOX 13 S

SW 02 B ASPAN PROSPECT



SW 02 D ASPAN NESTING



SW 02 E



ASPAN VECTOR 2D

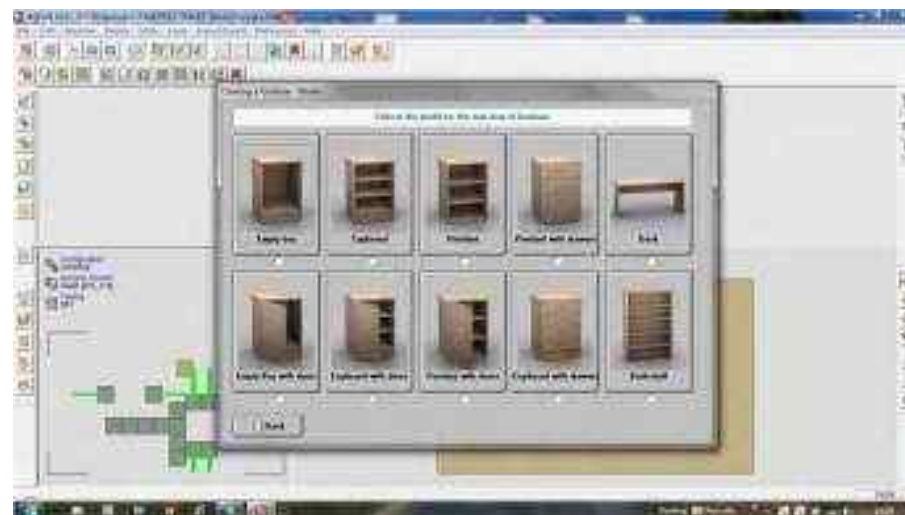


FOX 13 S

SW 02 F ASPAN DOORS



SW 02 G ASPAN CABINET



SW 02 H



ASPAN CAM 3D

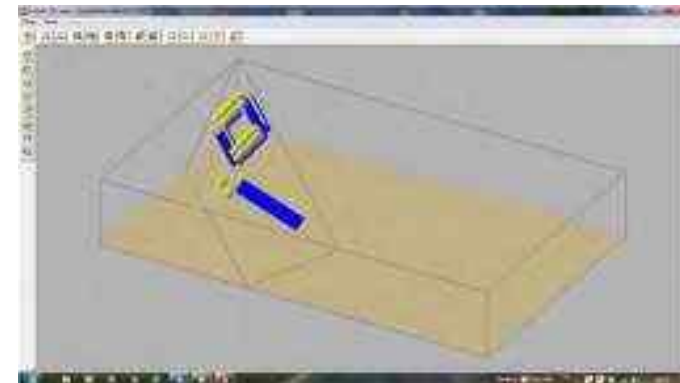


FOX 13 S

SW 02 I ASPAN QUOTATION



SW 02 L ASPAN 3D WORKS



SW 02 M ASPAN LABELLING





FOX 13 S

SW 02 N

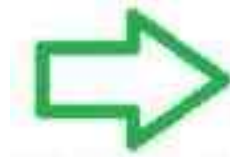
SUPPLEMENTARY
ASPAN PROSPECT
LICENSE

SW 02 O

SUPPLEMENTARY
ASPAN SE LICENSE



SW 02 Q UPGRADE FROM ASPAN SE TO ASPAN PROSPECT





FOX 13 S

SW 10 A

3 DAYS SOFTWARE TRAINING



SW 10 B

5 DAYS SOFTWARE TRAINING



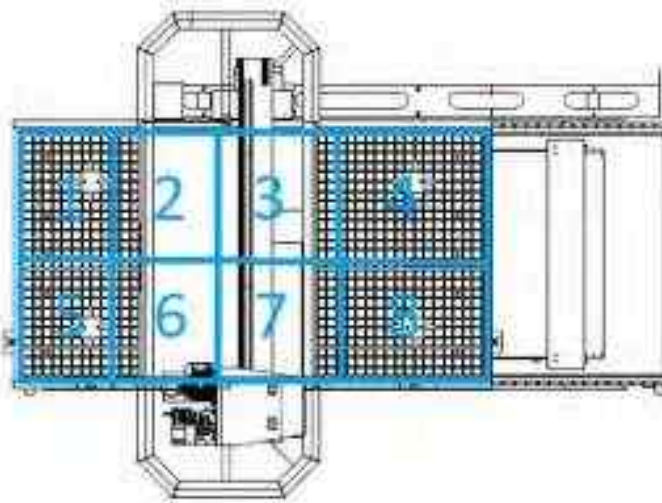


FOX 13 S

XX «FLEXIBOX» ALUCOBOND DEDICATED SOFTWARE



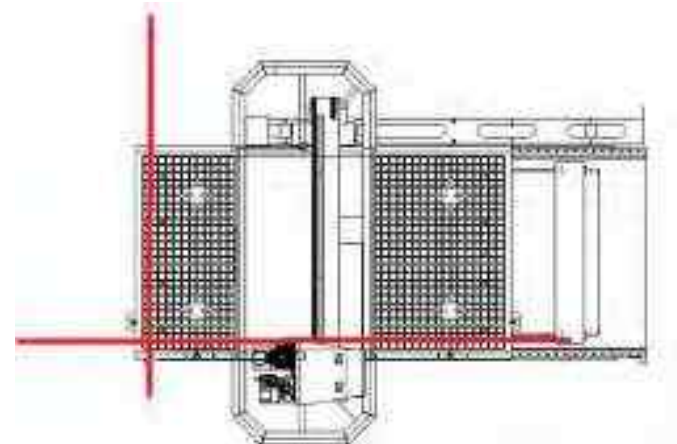
XXX



8 VACUUM AREAS

XXXX

DOUBLE LASER,
CLEAR UP TO 2000mm





FOX 13 S

XXX
XX
4 x 3 KW ROUTER
WITH INVERTER
24000 RPM ER 32



XXX
XXX



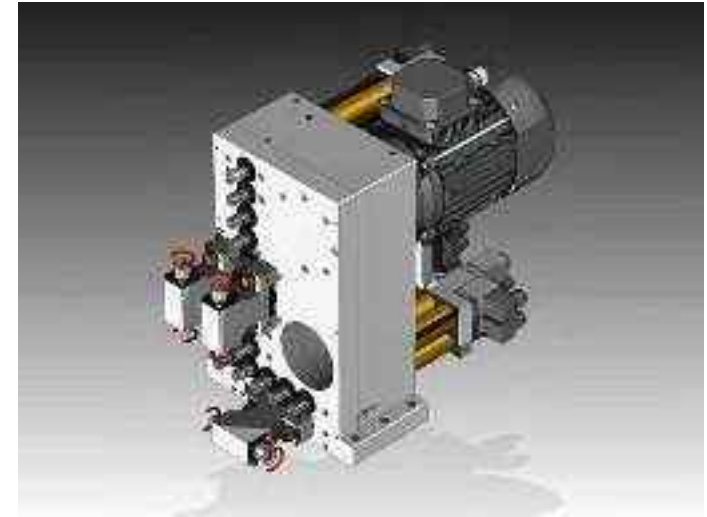
4 x 3 KW ROUTER
WITH INVERTER
24000 RPM ER 32



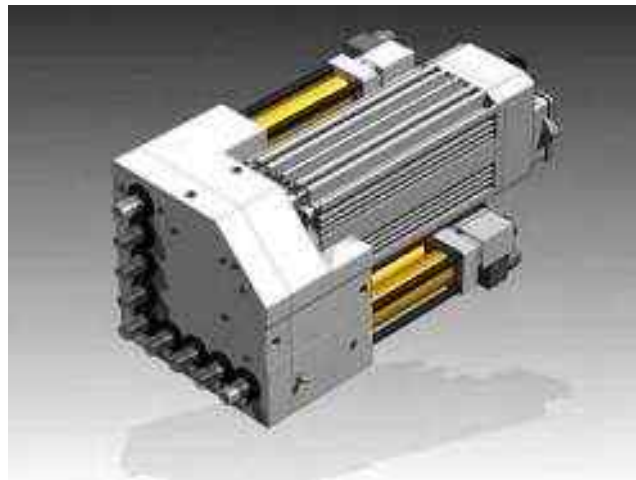
FOX 13 S

XXX
XXXX

DRILLING UNIT
8 VERTICALS + 6 HORIZONTALS



XXXX
XXXX



DRILLING UNIT 17 VERTICALS

XXXXX
XXXX

DRILLING UNIT
13 VERTICALS +
8 HORIZONTALS

